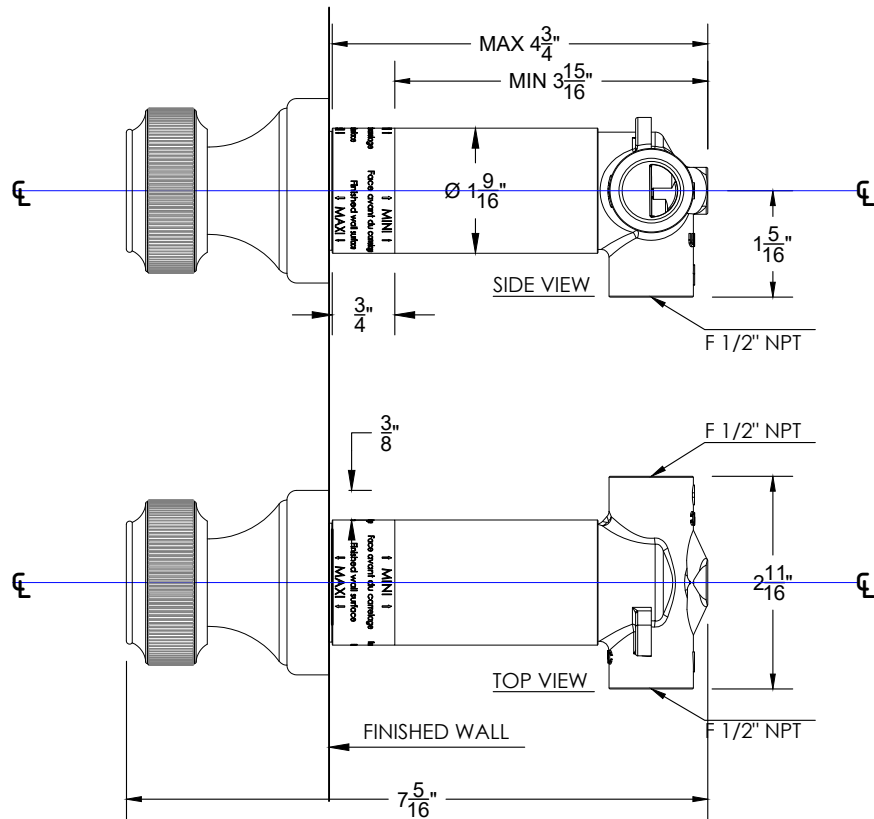


# KNURL

## 2 WAY DIVERTER WITH STOP

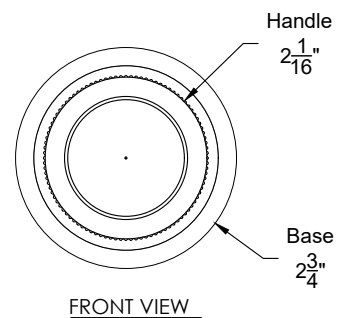
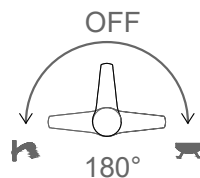
Wall mounted 2-Way diverter - F 1/2" NPT  
Trim and diverter included  
Facade dinverseur - 1/2" NPT  
Ref # 12906602

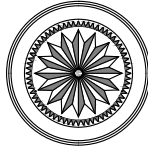


### NOTE

Recommended to used with a volume control ON / OFF 3/4" but, it can be use without. This diverter has an - OFF - positions

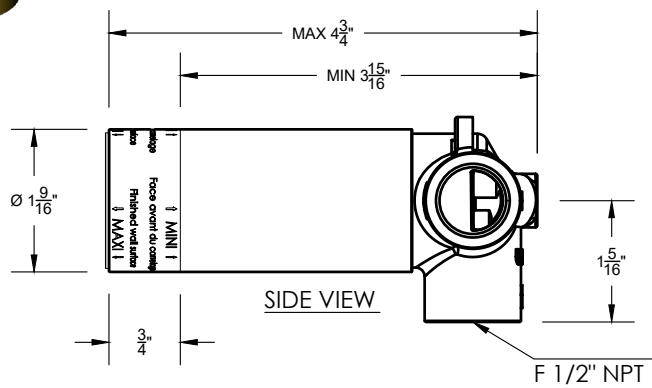
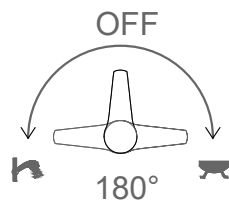
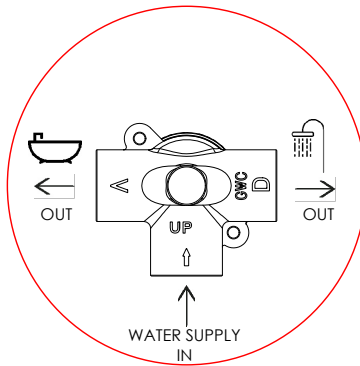
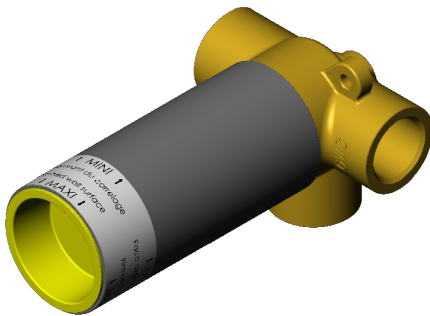
1 way water supply  
2 way out supplies to other components





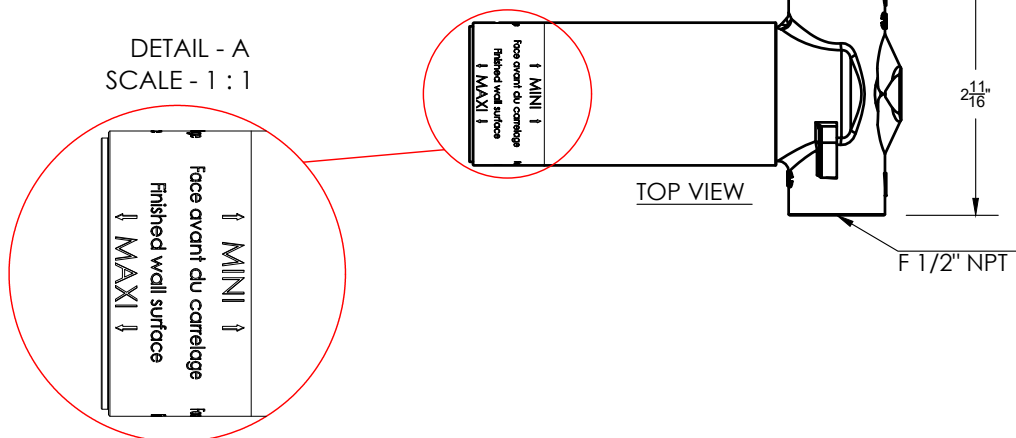
## 2 WAY DIVERTER

Wall mounted 2-Way Diverter - 1/2" NPT  
Facade D' inverseur 2-points - 1/2" NPT  
Ref # 0006642



SIDE VIEW

DETAIL - A  
SCALE - 1 : 1



TOP VIEW